

LINKEO

QUALITY TAILORED
TO YOUR PROJECT



THE **GLOBAL SPECIALIST**
IN ELECTRICAL AND DIGITAL BUILDING INFRASTRUCTURES

 **legrand**[®]

LINKEO

Providing the reliability, ease of installation and high level of performance you expect from Legrand products.

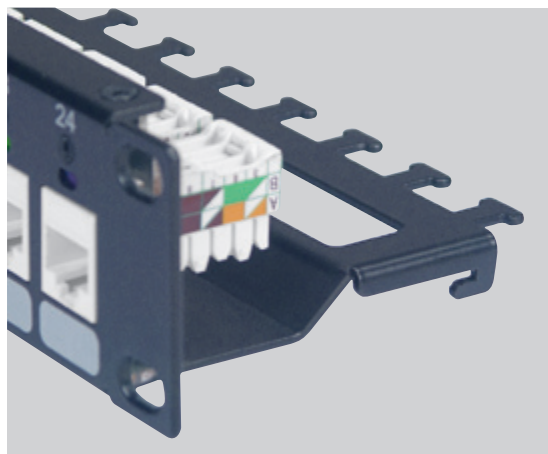
THE STRUCTURED CABLING SOLUTION

The Linkeo structured cabling solution is a cost-effective alternative for telecommunications engineers.

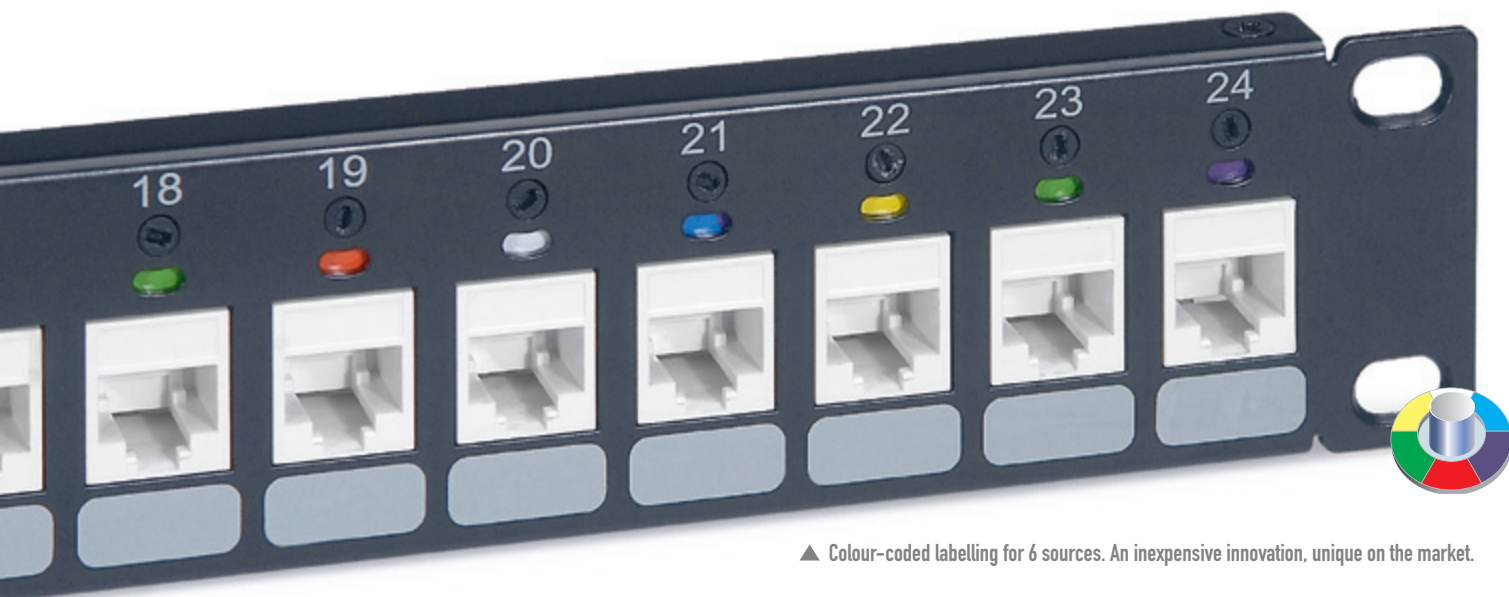
Its rugged components have been tested by independent laboratories to ensure conformity with the specifications of standards IA/EIA-568-C.2 and ISO11801-2010 relating to Category 5e and 6 components.

LINKEO PATCH PANELS

- Simplified identification of modules/sources
- Easy access to the installed panel
- Use of a single 6-port clip-on module
- Available in 24-port configuration
- Freedom of configuration (FTP, UTP, Category 6 or 5e)



▲ Easily accessible once installed in the cabinet by means of a hook on the patch panel



▲ Colour-coded labelling for 6 sources. An inexpensive innovation, unique on the market.

Legrand cabling system

patch panels, keystone and patch cords

LINKEO KEYSTONE CONNECTORS

- Label for easy marking
- Standard connection using 110 cabling tool
- Trapezoidal footprint offers optimum flexibility during installation allowing insertion from behind the faceplate. Connection is possible before, during or after installation.



▲ Available in UTP and FTP, categories 6 and 5e

LINKEO PATCH CORDS

- Available in 4 or 5 lengths and 4 colours
- Every cable has been rigorously tested to check the performance of its components.



6 327 91



6 327 05

Pack	Cat.Nos	Patch panels to be equipped
1	6 327 90	Modular empty panel for 24 unshielded keystone jacks cat. 6 and cat. 5e
1	6 327 91	Modular empty panel for 24 unshielded keystone jacks cat. 6 and cat. 5e supply with rear plastic cable support
1	6 327 92	Modular empty panel for 24 shielded or unshielded keystone jacks supplied with rear metal cable support. Fitted with 6 rotating color wheels (blue, green, red, yellow, purple and white)
		Keystone
		Keystone 110 connect thanks to integrated crimping Take AWG 22 single-core cables up to AWG 26 and AWG 26 multicore cables Contacts marked with dual colour code and wiring schemes T 568 A and T 568 B Conforms to standards ISO/IEC 11801 Ed. 2.0, EN 50173-1 and TIA/EIA 568
25	6 327 06	RJ 45 sockets cat. 6 FTP 110 - 8 contacts 90°
30	6 327 05	UTP 110 - 8 contacts 90°
25	6 327 04	RJ 45 sockets cat. 5e FTP 110 - 8 contacts 180°
30	6 327 03	UTP 110 - 8 contacts 180°
		Patch cords
		RJ 45 - RJ 45 PVC
		U/UTP cat. 6 unscreened impedance 100 Ω Light blue
20	6 327 50	Length 1 m
20	6 327 51	Length 1,5 m
20	6 327 52	Length 2 m
20	6 327 53	Length 3 m
20	6 327 54	Length 5 m
		U/UTP cat. 5e unscreened impedance 100 Ω Light pink
20	6 327 30	Length 1 m
20	6 327 31	Length 1,5 m
20	6 327 32	Length 2 m
20	6 327 33	Length 3 m
20	6 327 34	Length 5 m
		F/UTP cat. 6 screened impedance 100 Ω Blue-green
20	6 327 60	Length 1 m
20	6 327 61	Length 2 m
20	6 327 62	Length 3 m
20	6 327 63	Length 5 m
		F/UTP cat. 5e screened impedance 100 Ω Light brown
20	6 327 40	Length 1 m
20	6 327 41	Length 2 m
20	6 327 42	Length 3 m
20	6 327 43	Length 5 m



FOLLOW US
ALSO ON

@ www.legrand.com

 www.youtube.com/legrand

 twitter.com/@legrand



World Headquarters
and International Department
87045 Limoges Cedex - France
Tel.: + 33 (0) 5 55 06 87 87
Fax: + 33 (0) 5 55 06 74 55